

HOMEOWNERS' ASSOCIATION Rockwood TIMES



SHOP LOCAL

One of the easiest ways you can give back to your community is to do your holiday shopping - gifts, gift cards and certificates - at your locally-owned business !

**Wishing you all a
Happy & Healthy
Holiday Season!**

Do the right thing
Your actions matter



**Wear a non-medical mask
when physical distance
cannot be maintained**

mississauga.ca/coronavirus



Mandatory Face Covering By-law

Wearing a face covering or face mask in indoor public spaces is required under a City By-law until January 20, 2021. You must also wear a face covering or face mask while using MiWay Transit.

**Healthcare
Heroes**

Thank You!

**FOOD BANKS
NEED YOUR SUPPORT!**
TMFB Neighbourhood
For Food Bank
Hours of Operation
during COVID-19 - visit
themississaugafoodbank.org
for regular updates



T'is the Season...

With the holidays just a few weeks away, it's hard to imagine how we will celebrate the season, while staying within the ever-changing COVID-19 rules and lockdowns. But we will. Public Health is already warning that even family gatherings are dangerous. Residents heeded the warnings about Halloween, so let's hope everyone will find a way to ensure Grandma doesn't leave Christmas dinner with more than her welcomed gifts.

For many this year, shopping will not include the frenzied routine of finding a parking spot, wading through crowds, and waiting in line to pay at local malls. Instead, for many, on-line shopping or giving money—the gift that never has to be returned—will replace the dangers involved in community engagement.

This year, the number of parcel deliveries will surge. The "Porch Pirates" are already out there taking advantage of goodies piling up at front doors. The police are suggesting that you either request a signature, meaning the parcel is not left at the door without someone signing for receipt, or send it to someone who you know will be home. Be a good neighbour, if you see packages on your neighbour's front door, keep your eyes open for potential pirates. Better still, pick the up



the packages and return them when the owners arrive home.

It is important to remember those in need who could use a hand especially at this time of giving. COVID-19 has put a strain on the food banks, and in general, donations are down significantly to many charities. In the spirit of extending a helping hand to families in our neighbourhood, the Rockwood Homeowners' Association has made a donation of \$1,000 to our local St. Vincent de Paul Society. They will ensure that the funds will be spent in our community.

We encourage all who have the means to donate even a small sum, please do so. You can access The Salvation Army, The Mississauga Food Bank, Toy Mountain, and many others, on-line to make your donation. **RW**

AGM was a zooming Success

The RHA (Rockwood Homeowners' Association) held its first Annual General Meeting via Zoom on October 21, 2020. As requests for attendance exceeded our capacity of 100, several residents were unfortunately denied request for a link.

Councillor Fonseca was the keynote speaker, supported by City personnel who could speak to questions on: coyotes, plans for the new Burnhamthorpe Community Centre, the re-construction of Rathburn Road, and the proposal for Bough Beeches Blvd, topics which are covered in this newsletter.

Many questions were received from residents, so if your question was not answered, please let us know and we will follow up on your behalf. rha.executive@gmail.com

THE R.H.A.... YOUR COMMUNITY VOICE

www.rockwoodvillage.ca



LOCAL CONTACTS

RHA Executives

Vacant • President

Dale Biason • Vice President LM

Val Thomson • Treasurer LM

Kimberly Lulham • Secretary

Leszek Pisarek • Director LM

Frank Medoro • Director

Richard Schwarz • Director

Jason Haraschuk • Director

Catherine Mason • Director

Sumit Kapur • Director

Lisa Portolese • Associate Director

Boris Swedak • Advisor LM

Stephen Roscoe • LM

LM - (Life Member)

•

Airport/Noise Complaints

416-247-7682

torontopearson.com/webtrak

•

The Rockwood

Homeowners' Association

•

www.rockwoodvillage.ca

Email: rha.executive@gmail.com

•

The RHA is most grateful to the advertisers whose generous support made this newsletter possible.

In thanking the advertisers, we ask you to patronize them as their products and services merit your support!

•



Rockwood Homeowners' Association



Twitter @rockwood_rha

For Advertising and Editorial submissions contact:

rha.executive@gmail.com

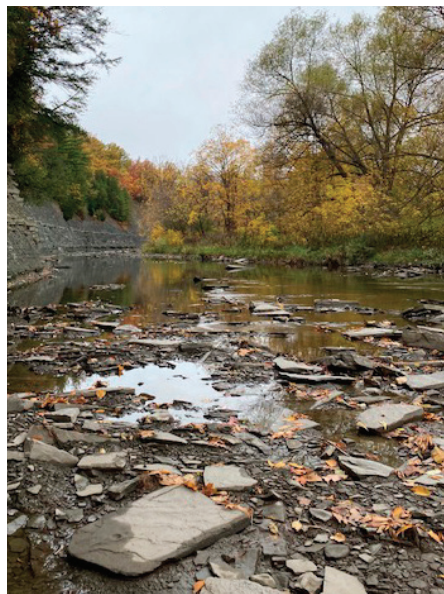
Production

SIRIUS DESIGN SERVICES

Email: kathryn.huse@icloud.com

Danger on Creek Bank Path

Last month we received a letter from a resident drawing attention to the dangerous condition of the walking path along the Etobicoke Creek. She wrote, "There are truly traitorous areas, and they are getting significantly worse."



She reminded us that a young woman lost her life in this same area in March 2019, when she slipped and fell over the bank in this same section. She warned, "If this path remains totally unmaintained and unmarked then I suspect it will not be the last."

The writer went on to say, "I've lived in this area for 30 years. I've been exploring the creek for over 25. I used to easily bike, run and walk this path daily. I now cautiously walk on nice days ONLY. I love the path. I know the path. I know the dangerous areas. I even attempt to block off dangerous areas for safety (set that log last week, many others have been put by me as well). Unfortunately, others are not so cautious and more importantly accidents happen in a nano second – especially down a high steep cliff."

This past Sunday, October 18th 2020, I saved a dog who fell down the cliff. I just happened to be down at the water and witnessed the dog fall – people may say "irresponsible dog owner allowing her off leash" however 90% of dogs I come across on my walks in this section are

off leash. Thankfully the dog lived. She was bruised, bleeding and most likely very broken boned but she was alive. The tumble and fall was truly terrifying to watch. I cannot imagine if that would have been a person or child not holding their parents' hand (which I hardly ever see them doing.)"

We need blockades in dangerous areas, maybe additional stumps like my neighbour and I have been placing. Along with some large clear signage on the path,



at all entrances and especially down by the bridge where people discover they can climb up that way – often not knowing what is awaiting them. Signage should say it all - steep hill, risk of fall, danger, hold child's hand, keep dog on leash, etc. I'm not sure what the solution is but we need more safety before more accidents – especially with the falling leaves covering the edges of the cliff making the narrow path appear wider than it is."

The RHA forwarded the message to Councillor Fonseca and were advised that the issue has been referred to City staff for comment. The reality is that this area is part of the (TRCA) Toronto Regional Conservation Authority. As safety should be a concern for all residents who use this path, the RHA will ensure that both the TRCA and our MPP, Kaleed Rasheed, are made aware of the conditions. We will keep the community posted. **RW**

.....

**PRACTICE PEACE AND
GOOD WILL**

Car Thefts on the rise in Rockwood

"Hi, we having been living in the Rockwood area on Chalkdene Grove for over 22 years. We have loved this area and have felt really safe until now. In March we had our 2018 Lexus SUV stolen off our driveway in the middle of the night, never to be located and then this Wednesday our 2018 Toyota 4 Runner was also stolen off our driveway during the night. Our friends around the corner on Bough Beeches also had their SUV stolen in October and our other friends on Claypine had their Lexus stolen in April. A total of 4 cars in 8 months. It would be interesting to know how many other residents in this area have had their car stolen. This is very disturbing. We

have a real problem here. Can you please post it in your next news letter to warn residents and also ask how many other people have had this happen.

Thanks,
Annmarie Arbeau"

Thanks for your letter alerting residents of this serious problem. In fact, there have been six car thefts in Rockwood Village in the past 30 days. In the past week, there were two reports of thefts from vehicles; however, there are probably more not reported. Other than these thefts, there are no other reports of crime in the neighbourhood in the past month.

The Peel Region Police have an app where you can actually see what crimes have been reported in the last month, by street. Just download the app at: <https://www.peelpolice.ca/en/in-the-community/crime-statistics-and-maps.aspx> or Google Peel Crime Maps.

As many cars now start electronically, thieves can crack the code and drive off in your car in under two minutes. Police are recommending that you store your keys well away from your front door and preferably in an insulated box or sleeve so that they cannot be cloned from outside. Perhaps we should clean out our garages and park our cars inside where it is safer!
Frank Medoro



Parthan Mohanarajan, a public education officer with the City, gave an overview of coyotes in Rockwood at the AGM. The presentation made it clear that, since the coyotes are not leaving, people need to learn to co-exist by learning how to stay safe. Tips for protecting pets and people were reviewed, and the negative impact of feeding was discussed. Please see our Website: rockwoodvillage.ca for more details.

Although coyotes and coywolf sightings are common in Rockwood, particularly along the hydro corridors, reported sightings are far fewer than other Mississauga sites. The reason that our sightings may seem less significant could be that residents are becoming accustomed to seeing the coyotes and do not report sightings. Reporting sightings gives Animal Services insight as to where to patrol and to potentially identify community outreach programs.

If you see coyotes, please report it! Use the interactive map found on the Animal Services/Wildlife section on Mississauga.ca to report sightings. You will be asked to identify the location, as well as the date and time of your sighting. This website is only for reporting sightings. If you want to report a sick or injured animal, call 3-1-1 or call Animal Services at 905-615-3000. *RW*

JOIN RHA - ONLY \$10.00 A YEAR!

Join your **Rockwood Homeowner's Association** to stay in touch and receive important news, notices and invitations to community meetings. You can support the RHA and your community by sending your \$10.00 membership fee to RHA.executive@gmail.com. A security code is no longer required. *RW*. Please join us at: rockwoodvillage.ca

ROCKWOOD VILLAGE

A NEIGHBOURHOOD TO BE PROUD OF!

**Moving can be an overwhelming & stressful time.
I can help make it easier!**

To explore my **Proven Marketing Plan** & Services I offer to get your home sold for top dollar, please contact me at any time.
Book your FREE appointment today!

Visit my website and hear from past clients directly!

JULIE KING

B R O K E R



DIRECT: 416.949.2857

julie@searchforhomes.ca

searchforhomes.ca



OFFICE: 905.828.1122
GEORGE GRDIC TEAM

COMMUNITY

Bumpy Ride for Bough Beeches Proposal

After a lot of discussion, many questions, and no resolution at the AGM, the subject of the proposal to add speed bumps the entire length of Bough Beeches had to be continued at a second meeting. A meeting, hosted by Councillor Fonseca, was held on November 11 to discuss the proposal prior to the December 1 deadline. Once again, residents were encouraged to send their remarks and questions to the Councillor and Colin Patterson, Road Safety Supervisor. The discussion revolved around four main themes: eliminating speeding along Bough Beeches; the prospect of shifting the traffic to other streets such as Hartfield, Lovelady and Audubon; alternative methods of speed control; and the effects of the speed humps on Fieldgate.

The meeting started with Mr. Patterson dividing the street into sections for purposes of the discussion. The first was from Rathburn west to Fieldgate, the second from Fieldgate west to Rathburn, and the third from Rathburn south to Burnhamthorpe. An initial poll was taken after the sections were proposed and the results were inconclusive.

Unfortunately, a large number of attendees were unable to vote and the yes and no votes, although close, did not indicate a clear majority in favor of the proposal. The

largest negative came for speed bumps in section two. The meeting was well represented by residents in this area on the west side of Fieldgate.

The City came with facts that indicate that speeds in front of Sts. Martha and Mary School have been reduced by 10 kms per hour. While some residents feel the speed cushions are too easily avoided, it is clear that the bumps have achieved their intended effect.

The question was asked as to why it is necessary to add more speed bumps on Bough Beeches. The City responded that the road is scheduled to be repaved in 2021 and, if traffic calming is required in the near future, it should be done at that time. Meanwhile, the City will be reducing the speed on all residential streets to 40 kms per hour next year. One resident spoke to a near incident involving her child and a speeding motorist. Another resident accused the City of pushing a project on the community rather than pulling out the appropriate information in this "push or pull" proposal. He also stated that speeding and safety should be handled by the police.

The residents west of Fieldgate have concerns that, just as the traffic has diverted from Fieldgate to Bough Beeches with the implementation of the speed bumps, drivers on Bough Beeches will divert onto Hartfield and Lovelady to avoid the new bumps. A resident of Claypine Rise, on the east side of Fieldgate, indicated that with more bumps on Bough Beeches, he would divert them by using Audubon to access Fieldgate.

Alternate means of speed reduction such as stop signs, cross walks, speed cameras and police presence were also discussed. The City does not acknowledge stop signs as an appropriate means to control speed. The prospect of using speed cameras might be a possibility in the coming years. There is an option of asking the police to do speed traps. This would require input from the community to identify the appropriate locations for two-hour blocks in both the morning and afternoon.

Compromise does not seem to be an option when it comes to the number of proposed bumps. While deleting a section may be an option, reducing the number within a section is not. Each section is to be considered as all or nothing at all. **RW**



PAULO CASALE
• SALES REPRESENTATIVE •

YOURSMARTESTMOVE.CA

Raising my own family in Rockwood Village gives me a great sense of community.

*When ready to make **the move**, I'm only a neighbour away.*

Paulo@YourSmartestMove.ca

DIRECT: 416.580.2855

OFFICE: 905.897.9555



NOT INTENDED TO SOLICIT CLIENTS CURRENTLY UNDER CONTRACT.



Clearing the way this winter
Residential roads:

less than 5 cm	5-15 cm	15-30 cm
within 24 hrs after the snow stops	within 24 hrs after the snow stops	within 36 hrs after the snow stops

mississauga.ca/snow

 **MISSISSAUGA**



New and Improved Community Centre

The City rolled out the plans for the changes coming to the Burnhamthorpe Community Centre at the RHA's AGM on October 21. Milka Slomislic, Project Manager, CDC and Andrew Noble, District Manager, Arenas Golf, unveiled the plans for the new and renovated Community Centre.

Residents were previously advised that the pool at Glen Forest needed to be replaced. In consideration of the cost to rebuild the pool, and the opportunity to update the Burnhamthorpe Community, to include a full complement of recreational activities, the City decided to relocate the pool to the



community centre.

The plans include a 43,000 sq. ft. addition plus renovation to the existing 65,000 sq. ft. structure. The amenities will include: an aquatic centre that features both a lap pool and a therapeutic pool, 20 universal change stalls, and a fitness centre with both men's and women's change rooms. To make room for the addition, the outdoor rink will be removed.

Construction is anticipated to start in April 2021 with the re-opening in the spring/summer of 2023. Once the construction starts, the existing building will be shut down and all functions and activities will be cancelled. **RW** More information and a virtual tour of the new facility are posted on our website: rockwoodvillage.ca

•WANTED•

Rockwood resident with a passion for following the GTAA and airport activity.

Please drop us a note at RHA.ececutive@com if you can help us stay informed.



Wishing you *Peace, Good Health & Happiness* this Christmas and into a Safe New Year!

Jolanta Pawlowska
Sales Representative

416 566 4056



Buying or Selling... We are here always working for YOU!

jpawlowska@trebnet.com • www.jolantarealestate.com

HomeLife/Response Realty Inc., Brokerage* • Tel: 905 949 0070 *Independently Owned and Operated • 4304 Village Centre Court • Mississauga • ON L4Z 1S2

WHEN YOU DECIDE TO SELL YOUR HOME...

Call
"The Great Negotiators"



MIKE CAHILL
BROKER
(416) 917-2920

MARTINA CAHILL
SALES REPRESENTATIVE
(647) 233-6891

RE/MAX® Real Estate Centre Inc., Brokerage *Independently Owned & Operated
1140 Burnhamthorpe Rd W, Mississauga, ON L5C 2S9

WWW.CAHILLHOMES.CA

Voted #1 Butcher shop in Mississauga!
Order your Holiday Lamb, Turkey, Capon or Ham today!



Customized Orders
Party Trays
Wholesale • Retail

• **Speciality Meats**
• **Deli • Catering**

3661 Dixie Road, S.E. corner of Dixie & Burnhamthorpe Rd.
PH • 905.624.1101 • FAX 905.624.4733
www.aurorameat.ca



Trail #11 ready for Spring

Work has already commenced on the new trail to be built along the Hydro corridor. Once completed, the 3.8 km paved trail will run from Audubon on the north to Dundas St. on the south. The trail will intersect with the Shafer Trail and, thereby, enhance both routes. Completion is scheduled for spring, 2021, weather permitting.

The City will provide standard amenities along the trail such as armour stone rest areas, benches, trail signage and garbage cans. The path will intersect major intersections such as Rathburn, Burnhamthorpe and Bloor. Swing gates will be used at entrances to discourage any vehicular traffic but will allow access for wheelchairs, strollers, and bicycles. These amenities meet Accessibility for Ontarians with Disabilities Act (AODA) standards. While the City has already placed stoplights at Burnhamthorpe, it has not yet been confirmed if a cross-walk, stop sign, or stoplights will be installed at Rathburn. The issue of children using this route to and from Sts. Martha and Mary School was put forward for consideration as part of re-imagining the Rathburn project. *RW*

Best Ever Recipe...

Here's a recipe, perfect for the Season of COVID. It is easy to make, requires no baking or special skills. It can easily be doubled or tripled, and when shared with others it multiplies.



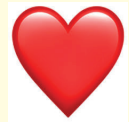
INGREDIENTS

- A generous pinch of patience
- A dash of kindness
- A spoonful of laughter (adjust to your needs)
- A heap of love



INSTRUCTIONS

1. Mix all the ingredients.
2. Garnish with hope.
3. Serve as often as you like.



From Lisa Portolese's Kitchen



Kingsbury Dental

Dr. Bruno Cavatassi

New Patients and Emergencies are Always Welcome



Providing Healthy Smiles
in your Neighbourhood
for over 25 years

905.629.1331



Located in Kingsbury (Longo's) Plaza
1891 Rathburn Road East, Suite 13,
Mississauga, ON., L4W 3Z3

www.kingsburydental.com

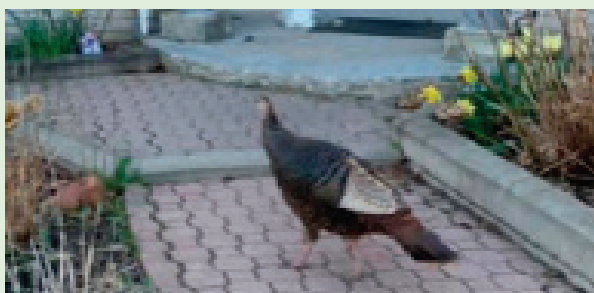
Re-Imagining Rathburn Road

Late last year, the City requested submissions from Rockwood residents of their ideas for Rathburn Road, east of Ponytrail. When construction of watermain work on Ponytrail was completed last year, the curbs and islands were temporarily repaired in light of resurfacing and other changes to be undertaken in 2021. This timing allowed for residents to have some input on changes to the area of Ponytrail and Rathburn.

At the AGM on October 21, Rory O'Sullivan, Transport Engineer, and Jeremy Blair, Manager of Transportation Infrastructure Management put forward the current proposal for the area.

Prior to the meeting, residents were asked once again to send their ideas. Many residents did, along with questions and even detailed plans. Several comments addressed the speeding issues along Rathburn and the desire to have the plan incorporate the challenge of eliminating speeding and racing along this stretch of roadway.

Unfortunately, time constraints did not allow for this topic to be fully discussed. Another Zoom meeting will be held as soon as possible. If you are interested in attending this meeting, please make sure you are on our e-mail list to receive details. Rha.executive@gmail.com or go to our website: rockwoodvillage.ca. **RW**



We will miss you ROCKWOOD ROXY!

In the early days of Covid-19, there were tales of Dolphins swimming in Venice, pollution was clearing and the sky was turning blue... and Roxy, a wild turkey, appeared in Rockwood. She soon became a hero of local residents, but sadly, her life ended suddenly on a street with NO Speed bumps. - Lisa Portolese



Donate toys and clothes to the Salvation Army, 3173 Cawthra Rd, Mississauga, ON L5A 2X4
Phone (905) 279-3941

JOIN RHA - ONLY \$10.00 A YEAR!

Join your **Rockwood Homeowner's Association** to stay in touch and receive important news, notices and invitations to community meetings.

Support the RHA and your community by sending your \$10.00 membership fee to RHA.executive@gmail.com. A security code is no longer required. **RW**. Please join us at: rockwoodvillage.ca

Freeze Out Auto Theft *NEVER leave a running car unattended!*

Peel Police point out that while newer cars only need 30 seconds to a minute to warm up, it only takes a few seconds to become the victim. The less time you use warming up your vehicle, the better it is for the environment, the easier it is on your wallet, and the lower your risk is of being a warm-up theft victim.



For General Inquiries call the
Non-Emergency line: 905-453-3311



THE ANNETTE VANCE TEAM

ROYAL LEPAGE
Signature Realty
THE UNION & OPERATED BROKERAGE

Curious about your homes value? Call me today at **416-825-5141** to find out right now!!

- STAGING & PAINTING • UPDATES & REPAIRS
- LANDSCAPING • CLEANING & DECLUTTERING
- PHOTOGRAPHY • EXPERT ADVICE

ANNETTE VANCE BROKER

office: 905 568 2121
email: annetteh@royallepage.ca
www.annettevance.com

Not intended to solicit those under contract with another brokerage.



On behalf of the Peel District School Board, I wish you and your families good health in these difficult times.
Stay Home. Stay Safe.

SUE LAWTON



PEEL DISTRICT SCHOOL BOARD TRUSTEE

905 625 8084

[@SueLawton2010](https://twitter.com/SueLawton2010) [f Sue Lawton](https://www.facebook.com/SueLawton)
susan.lawton@peelsb.com
www.peelschools.org



*It is an Honour
to Serve*
WARDS 3&4

*Merry Christmas, Happy Holidays
and a Joyous New Year
to you and your family!*



2020 has been a difficult year for us all and I would like to thank Ward 3 residents for their patience and hard work in helping us deal with the issues that have arisen from this pandemic.

We will get through this by working together!

Chris Fonseca

Ward 3 Councillor



facebook.com/chris.fonseca.mississauga



twitter.com/ChrisFonseca3

twitter.com/citymississauga

www.chrisfonseca.ca

www.mississauga.ca



Chris.Fonseca@mississauga.ca

38 years serving the community of
Dufferin-Peel Catholic District School Board



*Wishing you
and yours a
Merry Christmas
and a Happy,
Healthy, Holiday
Season!*

**MARIO
PASCUCCI**

Separate School Trustee (Mississauga)
WARDS 1 & 3

905 302 3096

mario.pascucci@dpacdsb.org

KALEED RASHEED

MPP – Mississauga East–Cooksville

*Your Member of
Provincial Parliament*



kaleed.rasheedco@pc.ola.org
905-238-1751

315-1420 Burnhamthorpe Rd. E.
Mississauga ON, L4X 2Z9

