



**Wishing you all a
Happy & Healthy
Holiday Season!**

Support your Local Businesses

One of the easiest ways you can give back to your community is to do your holiday shopping - gifts and gift certificates - at your locally-owned business !

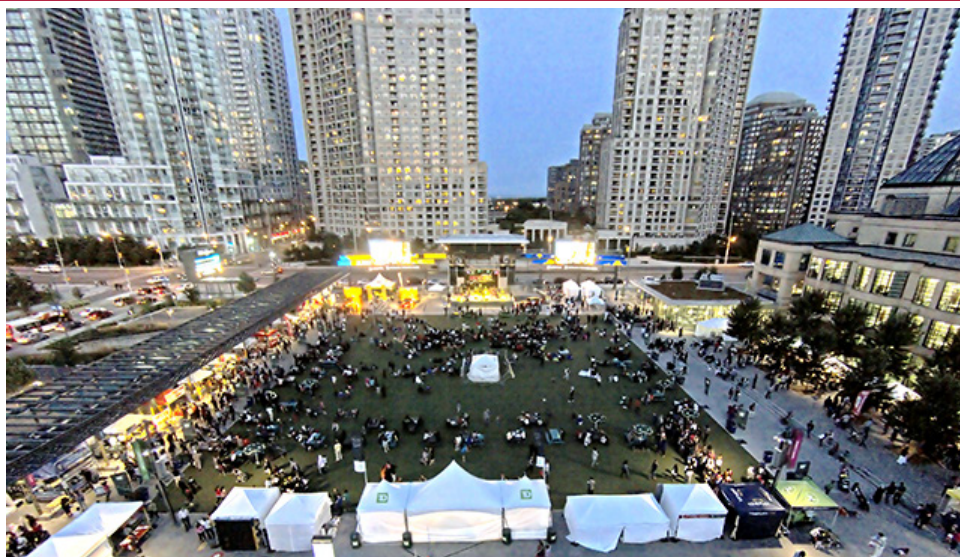
FREE PROGRAM Telephone Reassurance

Contact: *Square One
Seniors Wellness Services*
www.sq1oac.com
Phone: 905-615-3207
Email: squareonesws@rogers.com

The GIVING TREE



Make the wish of a local child come true this Christmas. Pick an envelope from the giving tree at Sts Martha and Mary Church. Details inside Page 6



The DOWNTOWN Strategy

In 1974 the first homeowners in Rockwood were taking possession of their homes. A year earlier, Square One opened its doors to the public. As early as 1969, it had been pre-determined that Square One would be designated as "the heart" or the Centre of Mississauga. Mississauga, at that time, was known as a bedroom community; everyone worked outside Mississauga. Mississauga was a suburb! When Applewood was built, in the 60's, the big feature was that every home had a garage. Living in the "burbs" meant you needed at least one car. By the 70's new homes generally featured two-car garages. Suburbanites were prepared to drive everywhere. Transit was available but not as convenient or as quick as by car.

In keeping with the times, early plans for the City Centre included buildings that were set back from the street with lots of street level parking. Basically they were

planned for suburbanites and totally devoid of the potential for urban living. By the early 90's Mississauga found itself in the same position as many other North American cities. There was a need to revitalize downtown and/or establish a main street. In 1994 the vision of 1969 had changed. The goal was to encompass a downtown that was "active, vibrant, with mixed use areas that encourage a wide range of pedestrian oriented activities."

In 2007 the City launched a widespread community engagement program that was known as "Our Future Mississauga - Be Part of the Conversation." After receiving the input of the community, the City Plan was amended to include five pillars. These included: developing a transit oriented city; ensuring that youth, older adults and immigrants thrive; completing our neighbourhoods; cultivating and creating innovative

continued on page 2

PRACTICE PEACE AND GOOD WILL TO ALL

*Share the feeling! Do you know an elderly person who is alone for the holidays?
Bring them a meal or better still invite them over to share a meal with you.*



LOCAL CONTACTS

RHA Executives

Joe Silva • *President*

Dale Biason • *Vice President LM*

Val Thomson • *Treasurer LM*

Kimberly Lulham • *Secretary*

Leszek Pisarek • *Director LM*

Frank Medoro • *Director*

Richard Schwarz • *Director*

Jason Haraschuk • *Director*

Catherine Mason • *Director*

Sumit Kapur • *Director*

Lisa Portolese • *Associate Director*

Boris Swedak • *Advisor LM*

Stephen Roscoe • *LM*

LM - (Life Member)

•

Airport/Noise Complaints

416-247-7682

torontopearson.com/webtrak

•

The Rockwood

Homeowners' Association

•

www.rockwoodvillage.ca

Email: rha.executive@gmail.com

•

The RHA is most grateful to the advertisers whose generous support made this newsletter possible. In thanking the advertisers, we ask you



Rockwood Homeowners' Association



Twitter @rockwood_rha

For Advertising and Editorial submissions contact:

rha.executive@gmail.com

Production

SIRIUS DESIGN SERVICES

Email: kathryn.huse@icloud.com

The Making of a City

When you think of a city, what attractions and amenities would you expect?

For visitors to Toronto the attractions would include City Hall, the Museum, the Art Gallery, theatres (both cinemas and live arts) the CN Tower, major league sports venues, the Aquarium, the Eaton Centre, Casa Loma, the St. Lawrence Market, High Park and Toronto Islands. If you look at a tour site it would also include the Zoo and Niagara Falls; however, neither is in vicinity of downtown Toronto.

Transit is an amenity that every city needs. Whether a tourist or a resident, being able to reach attractions, home and employment means using various options that do not include a car. This is the key factor between suburban and city living. Suburbanites have cars, urbanites take transit. Without a car, urbanites need to walk, bicycle or hop a streetcar or subway to shop, go to school or take in a movie.

An urban city will feature employment opportunities, places to live, shop, learn and play all with easy access without a car.

If you were a visitor to Mississauga how would it be measured as a destination city? Let's compare. There

are: a modern City Hall, museum, art gallery, theatres (both cinemas and live arts) Square One, historical properties seasonal farmers markets, parks and waterfront venues. While Toronto is closer to the Zoo, Mississauga is closer to Niagara Falls. In downtown Mississauga you will also find the YMCA, a transit terminal, the Central Library, the Playdium and Sheridan College. There are no big-ticket attractions like the CN Tower or the Aquarium and, while there are sports venues, there is no possibility that we will ever see major league sports venues.

Over the past 10 years the City has undertaken an urbanization of the City Centre. Those who live and work in City Centre now have many of the amenities of an urban city, perhaps on a more modern and smaller scale. With the initial phase reaching a finale, the City is once again looking forward. We encourage all residents to get involved and have their say as to how to improve the downtown experience.

We will keep you posted as to community involvement events, but in the meantime, you can provide your input at: yoursay.mississauga.ca/downtown/survey_tools/your-experience **RW**

The DOWNTOWN Strategy *continued from page 1*

businesses and living green. In terms of completing neighbourhoods, the goal for City Centre was to create a vibrant downtown.

It was not until 2010 that Downtown21 was launched and the plans for restructuring the City Centre were initiated. Foremost in the plan was to create an urban place in the heart of Mississauga. The City Centre was to be walkable, encourage arts and culture and also be accessible. It also included attracting offices and employers to the downtown core and establishing a "Main Street."

As 2021 is growing closer, the City is now in the process of revisiting the vision. Once again, it is reaching out to the community for involvement in the next chapter. The Downtown Strategy is looking for feedback. Mississauga wants your thoughts on:

- Downtown's strengths
- Opportunities for living, working, playing, gathering and learning downtown
- Your needs and aspirations
- Your vision for the future and actions required to get there.

Have your say on the future of Downtown Mississauga. Visit: yoursay.mississauga.ca/downtown/survey_tools/your-experience **RW**

Route 20 Changes



MiWay has announced changes to Route 20 effective June 29, 2020. However, as of now, no announcement has been made as to what the change will be, other than the final destination will no longer be the subway station. The RHA did meet with MiWay in the summer and presented their thoughts.

There are two options under consideration.

Option 1 is ending the route at the bus loop just east of Mill Rd. This option does not address the loss of the stops on Burnhamthorpe near the Creek that those on the east side of the subdivision use to access the closest bus stop.

Option 2 is turning east at Ponytrail and continuing to the dead end on Rathburn where it would turn around and go back. This option provides a pick up point for those in the east side of the subdivision; however, there is no transfer spot to access a bus to the subway. RW

You are invited to share your thoughts by leaving your comments on www.mivoice.ca.

**NEW
Speed
Limits
Coming**



The City of Mississauga has announced that it will commence reducing the speed limits in residential areas to 40 kms per hour. This program will roll out one neighbourhood at a time. The first 11 priority neighbourhoods designated will receive signage this year. Previously, the 40 km speed zones were only applicable to streets where schools are located. However, an amendment to the Highway Traffic Act and the Safer School Zone Act opened a path for municipalities to designate additional areas where the speed limit can also be reduced to 40 km/hr. Neighbourhoods in which the speed limit has been reduced will have signage posted at the entrance and exit points of the neighbourhood indicating that the speed limit in that area is 40 km/hr.

The RHA will work towards getting Rockwood on the priority list as quickly as possible. RW



THE ANNETTE VANCE TEAM

Signature Realty



Curious about your homes value? Call me today at 416-825-5141 to find out right now!!

- STAGING & PAINTING • UPDATES & REPAIRS
- LANDSCAPING • CLEANING & DECLUTTERING
- PHOTOGRAPHY • EXPERT ADVICE

ANNETTE VANCE BROKER

office: 905 568 2121
email: annetteh@royalpage.ca
www.annettevance.com

Not intended to solicit those under contract with another brokerage.



WHEN YOU DECIDE TO SELL YOUR HOME...

Call
"The Great Negotiators"



MIKE CAHILL
BROKER
(416) 917-2920

MARTINA CAHILL
SALES REPRESENTATIVE
(647) 233-6891

RE/MAX Real Estate Centre Inc., Brokerage Independently Owned & Operated
1140 Burnhamthorpe Rd W, Mississauga, ON L5C 2S9

WWW.CAHILLHOMES.CA

Voted #1 Butcher shop in Mississauga!
Order your Holiday Lamb, Turkey, Capon or Ham today!



3661 Dixie Road, S.E. corner of Dixie & Burnhamthorpe Rd.
PH • 905.624.1101 • FAX 905.624.4733
www.aurorameat.ca

Customized Orders
Party Trays
Wholesale • Retail

- Speciality Meats
- Deli • Catering

Mississauga is ready for Winter...are you?

It's that time of year! Winter arrived early this year but, according to Mayor Crombie, "Mississauga is ready and prepared for whatever winter weather may come our way. Whether it's snow or ice on our roads, winter crews will be working around the clock to make sure roads, bike lanes, sidewalks and bus stops are safe and accessible this winter. To minimize the impact on the environment, roads are only salted when needed. I encourage residents to drive according to weather conditions and give snow plows lots of space as they work to clear our roads and keep you safe."

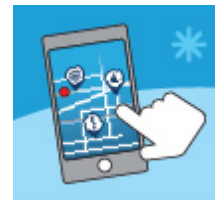
snow that falls, you can expect plows to come within 24 hours, assuming it is only 3"- 6". For more information visit mississauga.ca/portal/residents/levelsof service.

Mississauga Road App

To assist drivers in navigating the winter conditions and answer every resident's question as to "where are the plows?", the City has an app to allow you to track the snow plows as they work the roads in the area, identify road conditions, emergency closures and congested areas, using live traffic cameras.

The app will also allow you to view the latest weather forecast and read news from City Hall. You can also follow relevant Twitter feeds to keep up to date on any road related issues or events occurring.

The app is available for FREE on Apple App store and Google Play.



On-street Parking

While there are already on-street parking restrictions from 2 a.m.

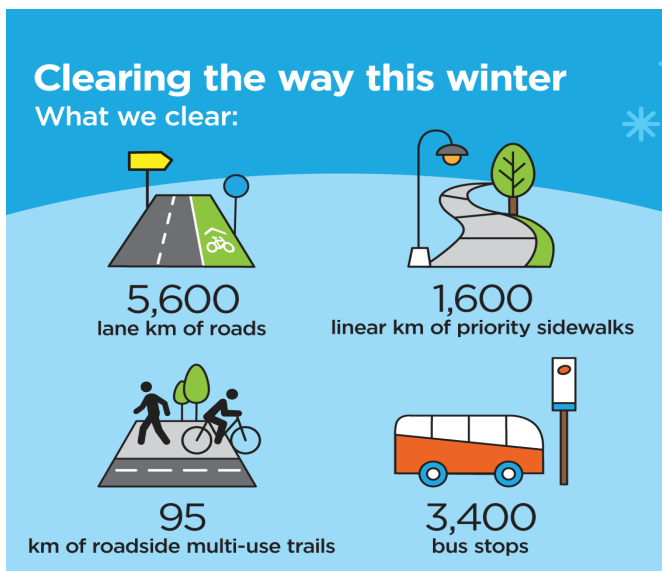
to 6 a.m., during snow clearing all parked vehicles on residential roads should be removed.

Temporary parking permits can be suspended at any time during winter operations and new permits will not be issued. According to the traffic by-law, vehicles parked on City streets will be issued a penalty notice and be subject to towing at the owner's expense.

Significant Weather Events

If the City declares a Significant Weather Event, service level timing starts after the declaration is lifted instead of when the snow stops. [RW](http://mississauga.ca/snow)

Visit mississauga.ca/snow



mississauga.ca/snow



This winter, the 378 pieces of snow clearing equipment will be deployed to clear 5,600 km of roads and on-street bike lanes, 1600 km of priority sidewalks, 3400 bus stops, 95 km of roadside multi-use rails and over 1,000 pedestrian crossings. Logistics indicate that snow will not be cleared from every road immediately. Based on the amount of



37 years servicing the community
on Dufferin - Peel Catholic District
School Board

**MARIO
PASCUCCI**

**Separate School Trustee (Mississauga)
Wards One and Three • 905-302-3096**

Freeze Out Auto Theft *NEVER leave a running car unattended!*

Peel Police point out that while newer cars only need 30 seconds to a minute to warm up, it only takes a few seconds to become the victim. The less time you use warming up your vehicle, the better it is for the environment, the easier it is on your wallet, and the lower your risk is of being a warm-up theft victim.

For General Inquiries call the
Non-Emergency line: 905-453-3311



The issue with Hurontario LRT's by Sumit Kapur

The LRT's tracks are indented and uneven, making a hazard for people with disabilities or with wheel chairs and parents with strollers a cumbersome crossing. It also becomes a tripping concern with joggers, young kids, seniors, cyclists, and someone wearing high heel shoes. This also extends to someone not paying attention while crossing, either being distracted while daydreaming or in a conversation with someone else with them. This impacts motorists also, when it rains or snows it may cause a serious slipping or lose control situation.

The Toronto LRT tracks are wider than the world specs, which makes the LRT to be custom designed, which inflates the cost considerably. The tracks and the roadways are also very expensive to maintain, and usually take away budgets from other transportation objectives, and may even take away budgets from social services operating budgets. Not mention that the over head electrical lines are an absolute eye sore for everyone, even someone in a condo nearby looking down.

The solution is to use buses; they are very effective and efficient. Buses can be moved and utilized instantly! There is an array of different kinds of buses to suit the need. Such as, buses that are double-decker, long buses that bend in the middle, gas powered, gas and electric hybrid, electric, and now the industry is testing Hydrogen and compressed air powered buses.

At this point you are probably wondering why I would be writing about this when there were many meetings about the Hurontario LRT that it is a done deal, and not a local issue. The answer is simple, Metrolinks and other government departments sometimes offer only lip service, and end up doing what they feel is right, at a massive cost to taxpayers. A prime example of this is the gas plant fiasco. Also, this affects us locally due to the taxation that would be funding this project, and even though it is a done deal, it is important to keep these issues in mind for the future of Mississauga transportation projects. *RW*



Thank YOU!

Many thanks to those who responded (50) to our call for membership in the last newsletter. The response was gratifying but revealed some flaws in what we hoped would be an easier method to receive funds.

As those who use e-transfers are aware, there are 2 components of this process. You need a security question and an answer. However, if we have to guess the answer and fail, after a few attempts we get locked out. As it comes through the bank, we do not know your e-mail, your phone number or your address. Unfortunately, unless you send us an email first, advising us of your answer, or ask a question for which we know the answer, we may not be able to accept your e-transfer.

We are in the process of transferring our account to a bank that will allow auto-deposits, and hope to accomplish this by early 2020. This new process allows deposit without the security question and answer.

For those of you who may have forgotten to pay your \$10.00 annual membership fee, and wish to e-transfer it now, we have listed some sample questions for which we definitely know the answer!

(Please Note: when sending you selected password please do not insert any spaces between the words.

Question	Answer
What is my neighbourhood	RockwoodVillage
What city do I live in	Mississauga
Who is President of the RHA	JoeSilva
Who is our Councillor	ChrisFonseca

Your Member of Provincial Parliament

Kaleed Rasheed, MPP

Mississauga East-Cooksville



315-1420 Burnhamthorpe Rd.E
Mississauga, ON
L4X 2Z9

Please feel free to contact my office if you require any assistance

kaleed.rasheedco@pc.ola.org | 905-238-1751



THE SPIRIT OF GIVING

'Tis the Season of Giving. Here are some great ideas to make this time of year even more special.

SHARE YOUR BLESSINGS

This holiday season help needy neighbours. Just \$2 will feed five people. Will you help?



Donate to the Mississauga Food Bank; or drop off foodstuffs where you shop or at a Fire Station. www.themississaugafoodbank.org / (905) 270-5589.

GIVE HOPE

Help to create a future without breast cancer. You can choose how you want to make an impact on lives of women and the future of our daughters. Your gift will support over 200,000 Canadians living with



breast cancer by funding the best and brightest researchers and providing the emotional support needed to those affected by this disease. Donate today! There are many ways you can make a difference and support a future without breast cancer. For information, please e-mail connect@cbcf.org, or call 1-800-387-9816 ext. 264.

PRACTICE GOOD WILL

Donate to a charity in lieu of buying a gift – This option is not only people friendly but also earth friendly.

Through The Water Project, make a gift of clean water to a family in need.

Donate seeds and livestock through Heifer International. And/or Donate toys and clothes to the Salvation Army.

Address: 3173 Cawthra Rd, Mississauga, ON L5A 2X4
Phone: (905) 279-3941



GIVE JOY



Every year, during the third week of November, the Giving Tree goes up at Sts Martha and Mary Church. Young children from our neighbourhood, who are in need, write a letter to Santa with their wish, and it is placed on the tree.

If you would like to help Santa, please pass by Sts Martha and Mary Church, pick a card from the tree, and sponsor the wish of a deserving child.
1870 Burnhamthorpe Road East, Mississauga
(905) 625-5670



Kingsbury Dental

Dr. Bruno Cavatassi and staff wish you and yours a safe and wonderful Holiday Season!



Providing Healthy Smiles in your Neighbourhood for over 25 years

905.629.1331

Located in Kingsbury (Longo's) Plaza
1891 Rathburn Road East, Suite 13,
Mississauga, ON., L4W 3Z3

www.kingsburydental.com

New Patients and Emergencies are Always Welcome

Did you know that socks are the most requested items at shelters?

"Put a Sock In It 'Sauga"

is a sock drive, coordinated through the **Open Window Hub**, to collect socks for distribution through the Hub as well as to local shelters across the city. Donations of warm hats, scarves and mitts are also appreciated.

The Open Window Hub, offered through the Mississauga Library, provides advice and the support of qualified social workers to those at-risk and homeless in Mississauga, with the objective of integrating them back into the community. Last year 1,000 pairs of sock were collected through donations at local libraries. This year the goal is 1,500 pairs.

Help those in need keep warm and dry this winter. Your donation can be dropped off at any library in Mississauga until February 2020. For more information about the sock drive, call 905-615-3200, Ext. 3541.



"Ask Joe"

Your Neighbourhood Handyman

Which is safer?

My wife and I are considering purchasing an artificial tree this year as we think that they are safer. Do you agree? Kris

Hi, Kris,

Even though real trees seem to pose the most threats in the home, artificial trees are equally as vulnerable to Christmas tree-light risks. It's easy for any tree, real or artificial, to catch fire when electrical sockets are overloaded with Christmas tree lights.

Even flame retardant or flame resistant artificial trees can eventually succumb to electrical fires, as their resistance does wear off. It is important to follow the instructions on the packaging for Christmas tree lights to determine how many light strings you can safely connect. Before buying your tree, make sure it hasn't been on a recall list. However, even if not recalled, pre-lit artificial trees can pose electrical shock hazards and possibly fire risks from exposed wiring, wiring that is too short, or cords that aren't plugged in completely. - Joe

Please submit your questions to "Ask Joe" rha.executive@gmail.com



SUE LAWTON, VICE CHAIR

 PEEL DISTRICT SCHOOL BOARD TRUSTEE

It is an honour to serve
WARDS 3&4

 @SueLawton2010  Sue Lawton

susan.lawton@peelsb.com

905 625 8084

www.peelschools.org

 District School Board



Sales Representative

Jolanta Pawlowska

Your Realtor Living and Working in Rockwood

Wishing you *Peace*
and *Happiness* this
Christmas and in
the *New Year!*

416 566 4056

jpawlowska@trebnet.com • www.homeliferesponse.com

HomeLife/Response Realty Inc., Brokerage* • Tel: 905 949 0070 *Independently Owned and Operated • 4312 Village Centre Court • Mississauga • ON L4Z 1S2



PAULO CASALE

• SALES REPRESENTATIVE •

YOUR SMARTEST MOVE.CA

*Raising my own family in Rockwood Village
gives me a great sense of community.*

*When ready to make **the move**,
I'm only a neighbour away.*

Paulo@YourSmartestMove.ca

DIRECT: 416.580.2855

OFFICE: 905.897.9555

Sutton

SUMMIT 

NOT INTENDED TO SOLICIT CLIENTS
CURRENTLY UNDER CONTRACT.





Long before anyone was ready, Mother Nature sent a strong message that winter 2019 had arrived! But, this is Canada, and Canadians are a hearty bunch who embrace the arrival of snow! Aside from the havoc on the roads and shoveling all the white stuff, the cold weather and winter has an upside. A whole new universe of activities is ready to be enjoyed by the whole family. In Mississauga, the arrival of cold weather marks the opening of the skating rink at *Celebration Square*. With the Christmas tree lit, and the square aglow with lights, it is a perfect place to enjoy the season.

New Year's Eve

Enjoy the Square with live music as you skate under the stars and await the arrival of 2020.

Let It SNOW

Skiing, Tobogganing, & Snow Boarding

in Centennial Park in Etobicoke depending on snow conditions.

Skating

Burnhamthorpe Community Centre offers both indoor and outdoor family fun skating and puck and stick shinny. There are also designated times for adult and 55+ skating and shinny. You can check the schedule at 905-615-4630 or online at <http://www7.mississauga.ca/departments/rec/skating/docs/2019-Fall-Public-Programs-Skating-Schedule.pdf>

- Heated change rooms are available for indoor skating.

If the great outdoors is not your thing, there are a couple of indoor venues that you might want to explore.

Bradley House Museum

- Step back in time and experience how the early settlers prepared and celebrated the season.



- In this early 19th century log cabin, enjoy the traditional music and the smell of food being cooked on an open hearth. For more information visit: culture.mississauga.ca/event/bradley-museum/home-holidays



Benares Historic House

- This elegantly restored early 20th century home is decorated in all its seasonal finery.
- This free family event includes the sights, sounds, smells, and tastes of Christmas past.
- Contributions to the local food bank are welcomed.

ROCKWOOD VILLAGE

A NEIGHBOURHOOD TO BE PROUD OF!

**Moving can be an overwhelming & stressful time.
I can help make it easier!**

To explore my **Proven Marketing Plan & Services** I offer to get your home sold for top dollar, please contact me at any time.
Book your **FREE** appointment today!

Visit my website and hear from past clients directly!

JULIE KING

B R O K E R



DIRECT: 416.949.2857
julie@searchforhomes.ca
searchforhomes.ca



OFFICE: 905.828.1122
GEORGE GRDIC TEAM



Please join us for our annual

FREE FAMILY FUN SKATE

FRIDAY • JANUARY 24, 2020

6:15 PM - 7:45 PM

**Burnhamthorpe Community
Centre INDOOR RINK
1500 Gullenden Drive**



Merry Christmas and Happy Holidays
to you and your family!

Chris Fonseca



905 • 896 • 5300

chris.fonseca@mississauga.ca



www.Chrisfonseca.ca

Twitter @ Chris_Fonseca3